



*Total Solution Provider in Saw Device*

---

# SA26425AV

264.0 MHz IF SAW Filter  
25.93 MHz Bandwidth  
Revision 0: 11. May. 2010



- Electrical Characteristics
  - Package Dimensions
  - Testing Environment
  - Frequency Characteristics
- 

**SAWNICS Inc.**

---

460 Cheonheung-ri, Seonggeo-eup, Cheonan-si, Chungcheongnam-do, 330-836 / Korea.  
Tel: +82 41 550 9372 / Fax: +82 41 550 9399 / [www.sawnics.com](http://www.sawnics.com)



## □ Electrical Characteristics

### Maximum Ratings

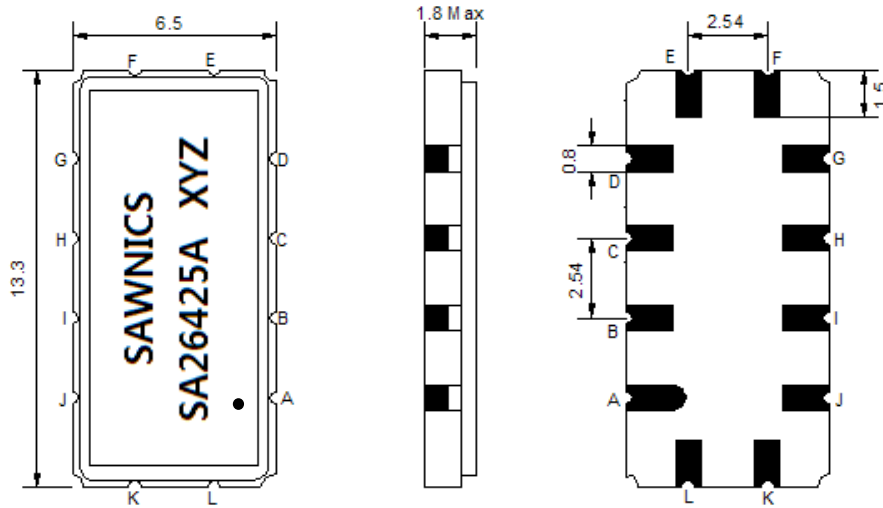
Parameters Description	Unit	Minimum	Typical	Maximum
Operating Temperature Range	°C	-5	-	60
Storage Temperature Range	°C	-40	-	85
Maximum DC Voltage	V	-	-	10
Maximum Input Power	dBm	-	-	10
Source Impedance (single ended) <sup>(1)</sup>	Ω	-	50	-
Load Impedance (single ended) <sup>(1)</sup>	Ω	-	50	-
Package type & size	V			
Length x Width	mm <sup>2</sup>	-	13.3 x 6.5	-
Height	mm	-	-	1.8

### Electrical Specification

Parameters Description	Unit	Minimum	Typical	Maximum
Center Frequency (Fo)	MHz	-	264.00	-
Insertion Loss at Fo	dB	-	29.50	31.50
Group Delay Variation at Fo ± 12.50 MHz	nsec	-	27	60
Absolute Delay at Fo	usec	-	2.02	-
Passband Ripple Variation at Fo ± 12.50 MHz	dB	-	0.70	1.10
Bandwidth at -1dB	MHz	25.60	25.93	-
Bandwidth at -3dB	MHz	-	26.37	-
Bandwidth at -40dB	MHz	-	28.25	28.50
Ultimate Rejection	dB	48	52	-
Temperature Coefficient	ppm/°C	-	-20	-

**Notes :** (1) With Matching Network (Ref. Testing Environment Circuit as shown below).  
Those impedances could be modified with different impedance values and/or structures, if necessary.

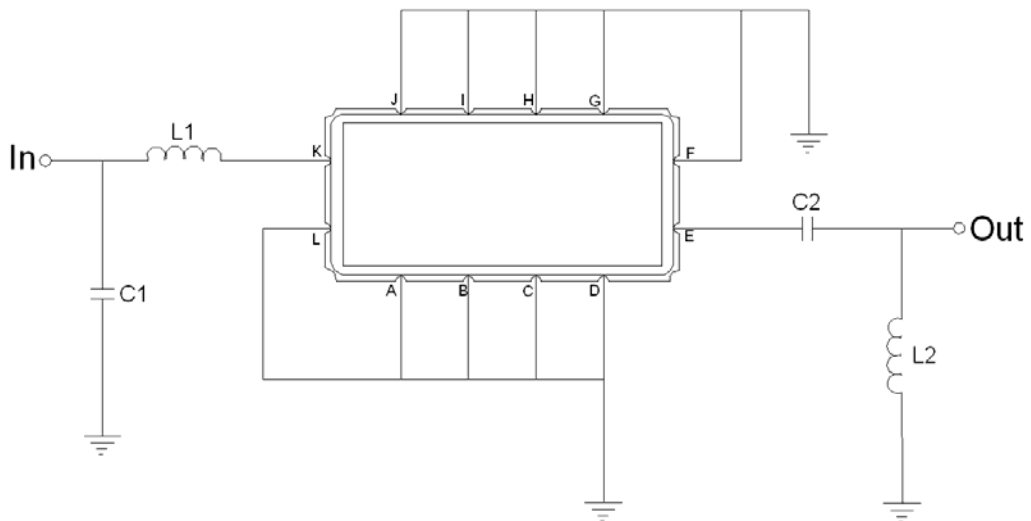
### □ Package Dimensions



- ① SAWNICS: Brand
- ② SA26425: Model Name
- ③ X : Date Code (Year)
- ④ Y : Date Code (Month)
- ⑤ Z : Date Code (Date)
- : Index Dot

Pin Description	
A, B, C, D, F, G, H, I, J, L	Ground
K	Input
E	Output

### □ Testing Environment



Test Fixture & Values	
Input	L1 = 12 nH, C1 = 43 pF
Output	L2 = 8.2 nH, C2 = 56 pF
Source/Load Impedance	50 Ω

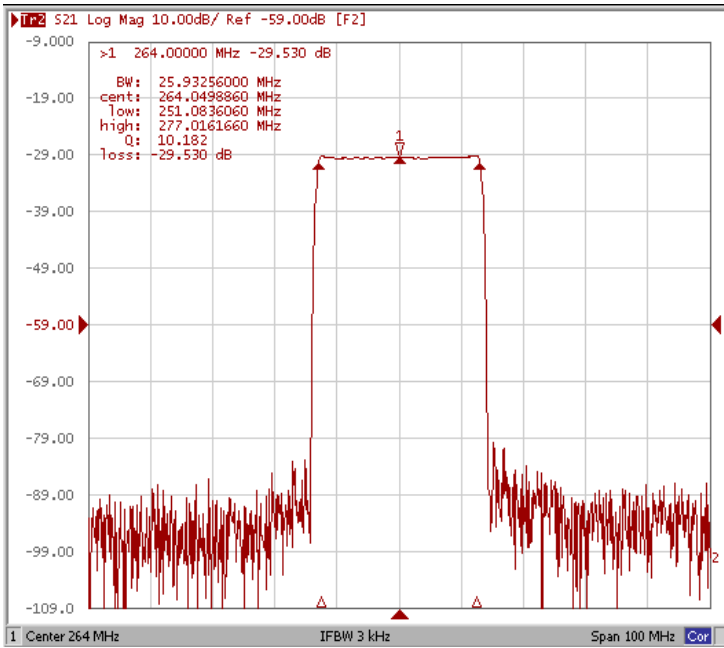


## □ Frequency Characteristics

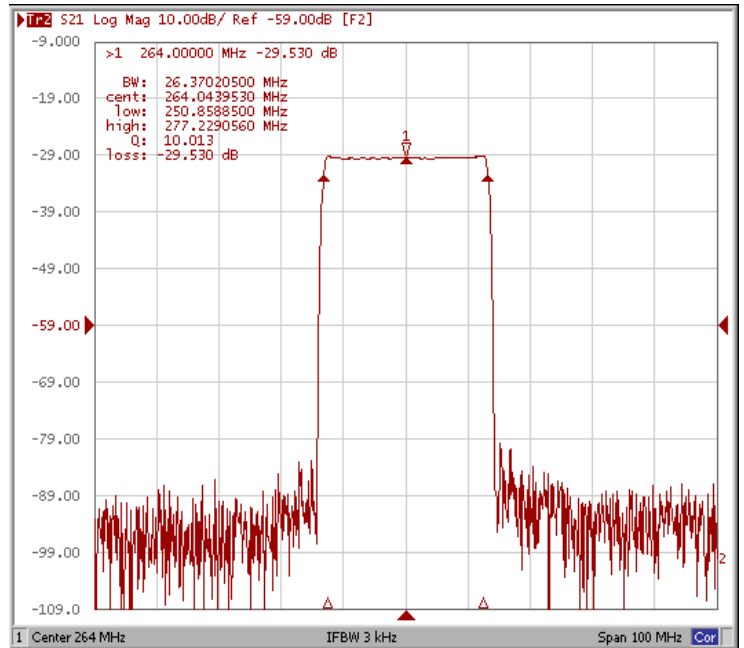
### Frequency Response

\*Room Temp. 25 degree

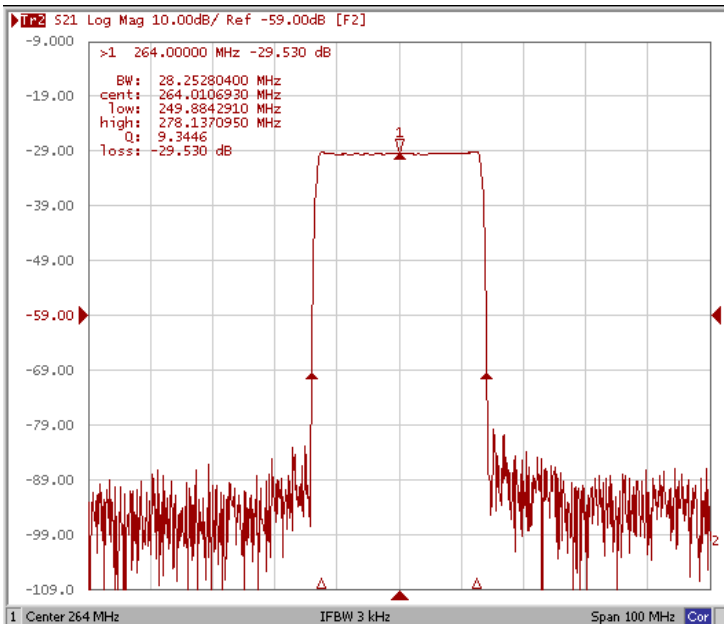
Bandwidth at -1.0 dB



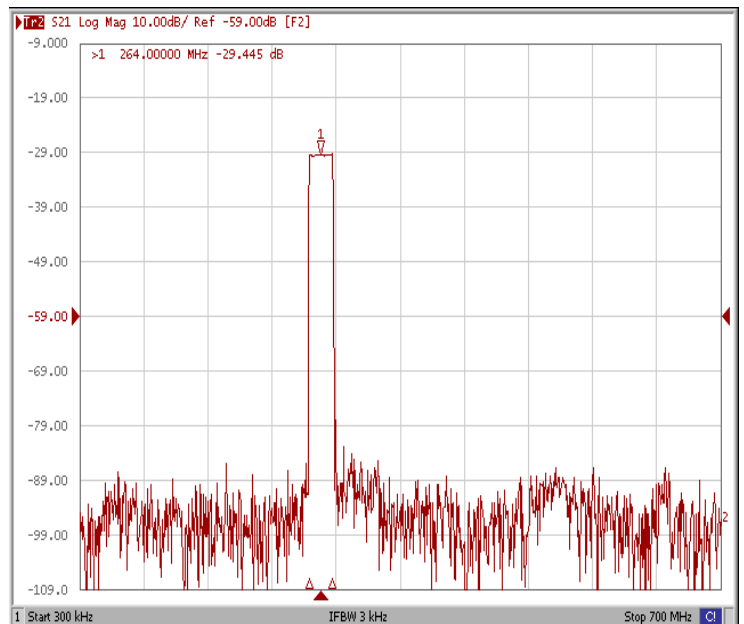
Bandwidth at -3.0 dB



Bandwidth at -40 dB



Wide-Band



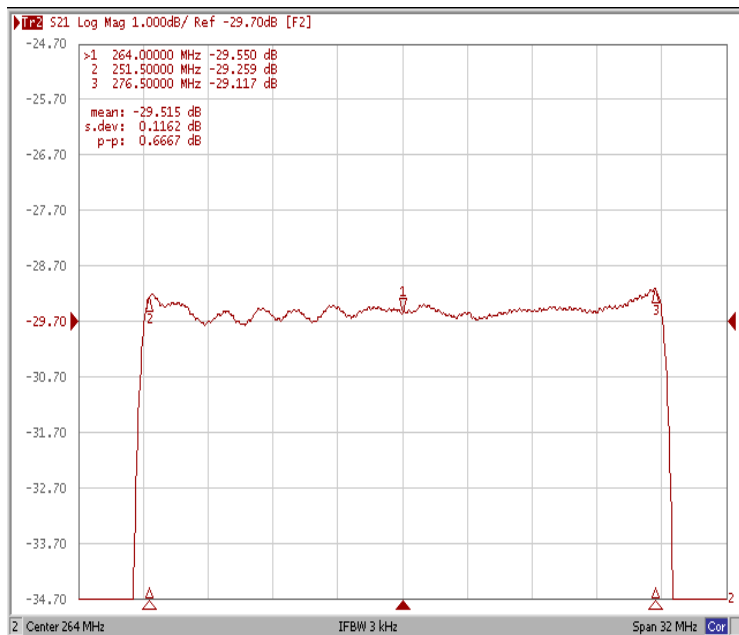


# Frequency Characteristics

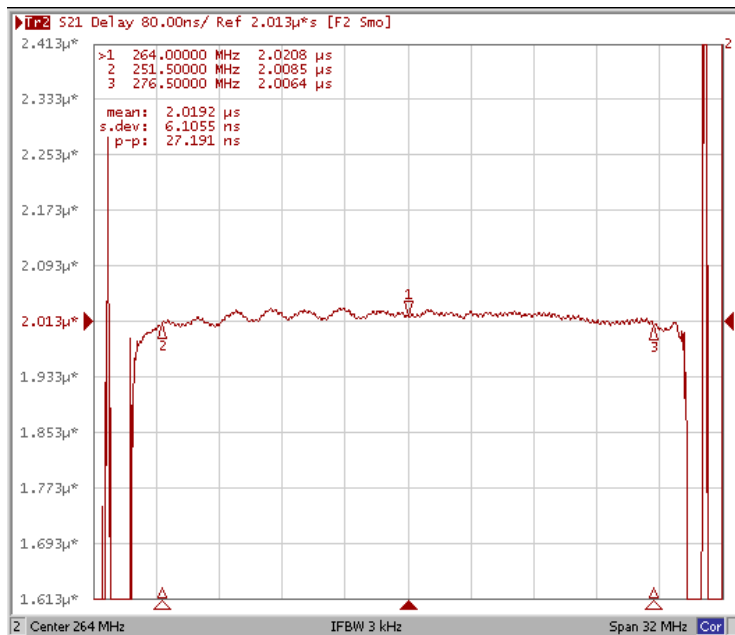
## Frequency Response

\*Room Temp. 25 degree

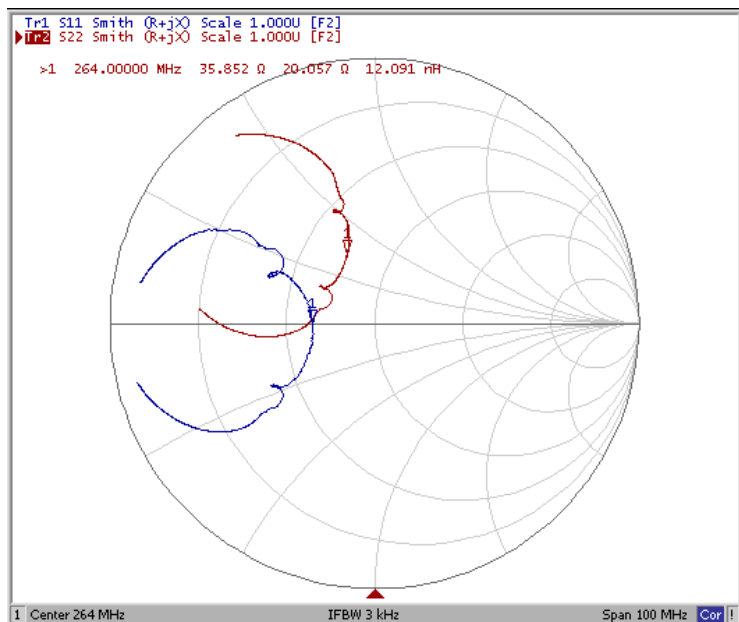
Ripple Variation  $Fo \pm 12.5$  MHz



Group Delay Variation  $Fo \pm 12.5$  MHz



Smith Chart



VSWR

